

Philips HeartStart OnSite Defibrillator  
Supplies and accessories



Products and services, maximizing  
defibrillator performance

## Carry Cases

There are three carry cases available for the HeartStart OnSite Defibrillator: the Standard Carry Case, the Slim Carry Case and the Hard-shell waterproof case.

The Standard and Slim cases are constructed with semi-rigid materials and covered in durable red cordura. A window pocket inside both cases holds the OnSite Quick Reference Guide.



**Standard Carry Case**  
**Item #M5075A**

In addition to the OnSite Defibrillator, the Standard Carry Case (M5075A) is equipped with a pair of paramedic scissors and can accommodate one spare pads cartridge and a spare battery pack.

Dimensions:  
9.5" (24 cm) w X 8.5" (21 cm) h X 4.8" (12 cm) d



**Slim Carry Case**  
**Item #M5076A**

The Slim Carry Case (M5076A) holds the OnSite Defibrillator and a pair of paramedic scissors.

Dimensions:  
9.5" (24 cm) w X 8.5" (21 cm) h X 3.5" (9 cm) d



**Hard-shell Carry Case**  
**Item #YC**

Our waterproof carry case made of hard-shell plastic (product code YC) is suited for more rigorous use, particularly in wet outdoor settings. It can also accommodate the contents of the Fast Response Kit.

Dimensions:  
13.5" (34 cm) w X 12" (30 cm) h X 6" (15 cm) d



**Quick Reference Guide**  
**Item #M5066-97800**

The Quick Reference Guide is a brief instruction guide for defibrillator operators. Its short captions and straightforward drawings break down each step of the defibrillation process.



**Fast Response Kit**  
**Item #68-pchat**

The Fast Response Kit contains tools and supplies typically needed for patient care and personal protection: 2 pairs of hypoallergenic nitrile gloves, a Laerdal pocket breathing mask, paramedic scissors, a Gallant chest hair razor, and a large extra-absorbent paper towel. These items are housed in a zippered pouch which attaches securely to the handle of either carry case.

Dimensions:  
9.5" (24 cm) w X 5.5" (14 cm) h



**Long-life Battery**  
**Item #M5070A**

The OnSite Defibrillator uses a disposable, lithium manganese dioxide, long-life battery with a five-year shelf life plus a (typical) four-year installed life.

A spare battery should be stored with the defibrillator. Additional batteries should be purchased for defibrillators used frequently for training and/or demonstrations.

## SMART Pads Cartridges

The pads are "SMART" because they work with the device to sense whether they have been removed from the cartridge and placed on the patient's skin. Pictures on the pads illustrate correct placement.

Defibrillation pads should be replaced after each use, or once every two years.

### Adult SMART Pads Cartridge Item #M5071A

HeartStart Adult SMART Pads are appropriate for cardiac arrest victims weighing 55 pounds (25 kg) or more.



### Infant/Child SMART Pads Cartridge Item #M5072A

Children under 8 years of age or weighing less than 55 pounds (25 kg), including infants, should be treated using HeartStart Infant/Child SMART Pads. These pads instruct the defibrillator to reduce the energy of its shock from 150 to 50 Joules (J), a more appropriate dosage.<sup>1,2</sup> The Infant/Child Pads cartridge is marked with an indication of patient weight and with a teddy bear icon for easy identification. Purchase of this product requires a prescription.



## Training Tools

### Training Cartridges

To facilitate training on the OnSite Defibrillator, Adult (M5073A) and Infant/Child (M5074A) Training Pads Cartridges are available. These special purpose pads, when installed in the HeartStart OnSite, suspend the defibrillator's ability to deliver a shock and activate its training mode, enabling the user to run any of eight emergency scenarios. Depending on which cartridge is used – Adult or Infant/Child – the defibrillator's voice instructions, including cardiopulmonary resuscitation (CPR) coaching, will be appropriate for treating the simulated victim.

Each training pads cartridge consists of a removable clear protective lid with a handle, a resealable film cover, and a pair of reusable adhesive pads.\* It is packaged with a Pads Placement Guide (either Adult or Infant/Child) and illustrated instructions for installing the cartridge, using the Pads Placement Guide, and repackaging the cartridge after using it. A training pads cartridge can also be used on a manikin, connected with an internal (M5088A) or external (M5089A) manikin adapter.

### HeartStart Trainer

For training many responders simultaneously, the Philips HeartStart Trainer (M5085A) is a flexible and economical solution. The HeartStart Trainer helps your responders learn to use the OnSite Defibrillator. With voice instructions matching those of the OnSite Defibrillator and eight preconfigured scenarios, the Trainer simulates how the defibrillator would operate during real-life situations the responders might encounter.

The HeartStart Trainer comes with a nylon carrying case, one reusable Adult Training Pads Cartridge (M5073A) and one External Manikin Adapter. Optional accessories include the Internal Manikin Adapter (M5088A) for use on selected manikins, the External Manikin Adapter 10-pack (M5089A) for use on all manikins, the Adult Pad Placement Guide (M5090A), and the Infant/Child Training Pads Cartridge (M5074A).

### Instructor's Training Toolkit

The training toolkit (M5066-89100) includes instructional aids, such as a videotape and CD with a PowerPoint presentation, for teaching groups of people to operate the HeartStart OnSite Defibrillator and the HeartStart FR2+ Defibrillator.



Adult Training Pads Cartridge  
Item #M5073A



Infant/Child Training Pads Cartridge  
Item #M5074A



HeartStart Trainer  
Item #M5085A



Instructor's Training Toolkit  
Item #M5066-89100

1. Tang, et al. Pediatric Fixed Energy Biphasic Waveform Defibrillation Using a Standard AED and Special Pediatric Electrodes. Supplement to Circulation, Vol 102, No 18, October 31, 2000, II-437.

2. Cecchin, et al. Is Arrhythmia Detection by Automatic External Defibrillator Accurate for Children? Sensitivity and Specificity of an AED Algorithm in 696 Pediatric Arrhythmias. Circulation 2001; 103:2483-2488, May 22, 2001.

\* Replacement pads are available for training cartridges: Adult, M5093A and Infant/Child, M5094A.

## Wall Mounting Solutions

Philips Wall Mount Bracket and Defibrillator Cabinets let you strategically place defibrillators for fast access and response.

### Wall Mount Bracket

The Wall Mount Bracket (M3857A) is designed specifically for housing a Philips HeartStart Defibrillator and its accessories. HeartStart OnSite's carry case can be tethered to the Wall Mount bracket with a breakaway Secure-Pull Seal (M3859A), to discourage tampering. A broken seal indicates that the defibrillator has been removed from the Wall Mount and accessories may need to be replenished.



**Wall Mount Bracket**  
Item #M3857A

Dimensions:  
10.6" (270 mm) w X 8" (204 mm) h X 5" (126 mm) d  
Weight: 19 ounces (.5 kg)



**Item #M3859A**  
Secure-pull Seal



**AED Wall Sign**  
Item #M3858A

An AED Wall Sign (M3858A) hanging above a Wall Mount Bracket or Defibrillator Cabinet gives even greater visibility to the defibrillator.

Dimensions:  
7" (18 cm) w X 10" (25.5 cm) h

### Defibrillator Cabinets

To mobilize an emergency medical response or deter AED theft, Philips offers 3 different battery-operated, alarmed wall cabinets. The basic cabinet has a simple audible alarm. Also available are two premium cabinets: a wall surface mounted cabinet and a semi-recessed cabinet\* that is inserted into a wall cut-out for a less obtrusive look. The premium cabinets feature combination audible and flashing light alarms. They are made of sturdy heavy-gauge steel, and are large enough to accommodate additional medical supplies, such as oxygen. You can also connect the premium cabinets' alarms to your internal security system so that a more coordinated emergency response can be mobilized centrally.

### Basic Surface Mounted Cabinet

Item #98980313651

Dimensions:  
16.5" (42 cm) w X 15" (38 cm) h X 6" (15 cm) d



### Premium Surface Mounted Cabinet

Item #PFE7024D

Dimensions:  
16" (41 cm) w X 22.5" (57 cm) h X 6" (15 cm) d

### Premium Semi-recessed Cabinet

Item #PFE7023D

Dimensions:  
Recessed Compartment –  
14" (36 cm) w X 22" (56 cm) h X 6" (15 cm) d

Footprint on wall –  
16.5" (42 cm) w X 24.5" (62 cm) h X 2.5" (6 cm) d



\* The Americans with Disabilities Act requires that objects not protrude more than 4 inches into foot traffic areas of open aisles and walkways unless the object's bottom edge is no higher than 27 inches from the ground.

## Data Management

Philips provides a broad range of tools to help you efficiently and effectively configure your HeartStart Defibrillators and then download, transmit, share, analyze, and report resuscitation data, so you and your medical director can fine-tune your response to cardiac emergencies. Whether you manage a community public access program, a school AED program, a corporate emergency response team, an EMS system, or your hospital's resuscitation committee, the Event Review software suite has the tools you need to manage your defibrillator data.

### HeartStart Review Express

Review Express lets you download an ECG from your defibrillator, view it and print it. The program can be downloaded from the Philips data management website at no charge. ([www.medical.philips.com/goto/eventreview](http://www.medical.philips.com/goto/eventreview))

### HeartStart Review Express Connect Item #861311 Opt A01

HeartStart Review Express Connect is an easy-to-use wizard that guides you through the steps of downloading an ECG from your defibrillator, allowing you to view it on your PC screen, print it, save it to a file, and e-mail it to colleagues who have Event Review products. You can also use it to erase the defibrillator's patient data. Review Express Connect is particularly helpful when you simply want to download a case and e-mail it to a central data manager or to your medical director for analysis using the more comprehensive HeartStart Event Review or Event Review Pro data management program.

### Event Review Item #M3834A (single PC) or 989803141811 (organization-wide)

Event Review allows you to download patient data from your defibrillator, and view it on your PC screen, annotate it with your comments, and add basic response and patient status information. You can save the case to a file or to a database, allowing ad hoc case queries, and case reports. You can also configure your OnSite with Event Review.\* It is available with single PC pricing or unlimited organization-wide pricing.

### Event Review Pro Item #861276 Opt A01

Event Review Pro\* is our comprehensive case management tool for the most demanding data managers and medical directors, with even more detailed data entry screens to record every aspect of the response, including detailed response times, interventions, and patient observations. In addition to the individual case reports, you get Utstein reporting and graphical summaries of your system's overall response times to help you manage your service levels more efficiently.

### HeartStart Case Capture Item #989803143051

You may prefer to download patient data from your OnSite Defibrillator without taking it out of service, so that it is immediately ready for the next use. HeartStart Case Capture runs on your palmOne™ handheld personal digital assistant (PDA), letting you download patient data from your defibrillator, to your PDA, where you can save it, view ECGs and events, and move it to your PC for further analysis and archiving using one of the HeartStart data management programs. Note: ECG viewing with this product is intended only for basic rhythm identification, and is not for diagnostic or ST segment interpretation. ECG viewing requires a high-resolution handheld screen and Palm OS® version 5.0 or later.

### HeartStart Configure Item #989803143041

HeartStart HeartStart Configure (989803143041) enables you to review and change the configuration of your OnSite Defibrillator using your palmOne handheld.\* With a few taps on the PDA's screen, retrieve the current configuration from your defibrillator, reset the configuration to default values or revise individual settings according to your medical director's preferences, and transmit them to the defibrillator. To more efficiently manage configuration for your defibrillator program, you can save values to a file on your PDA. This lets you transmit the same configuration to all your AEDs as well as maintain a record of allowable settings.



### The Infrared Data Cable Item #ACT-IR

Connected to a PC running HeartStart Review Express, Review Express Connect, Event Review or Event Review Pro, the Infrared Data Cable allows you to retrieve patient data from your OnSite Defibrillator for permanent storage as well as for viewing and reporting.

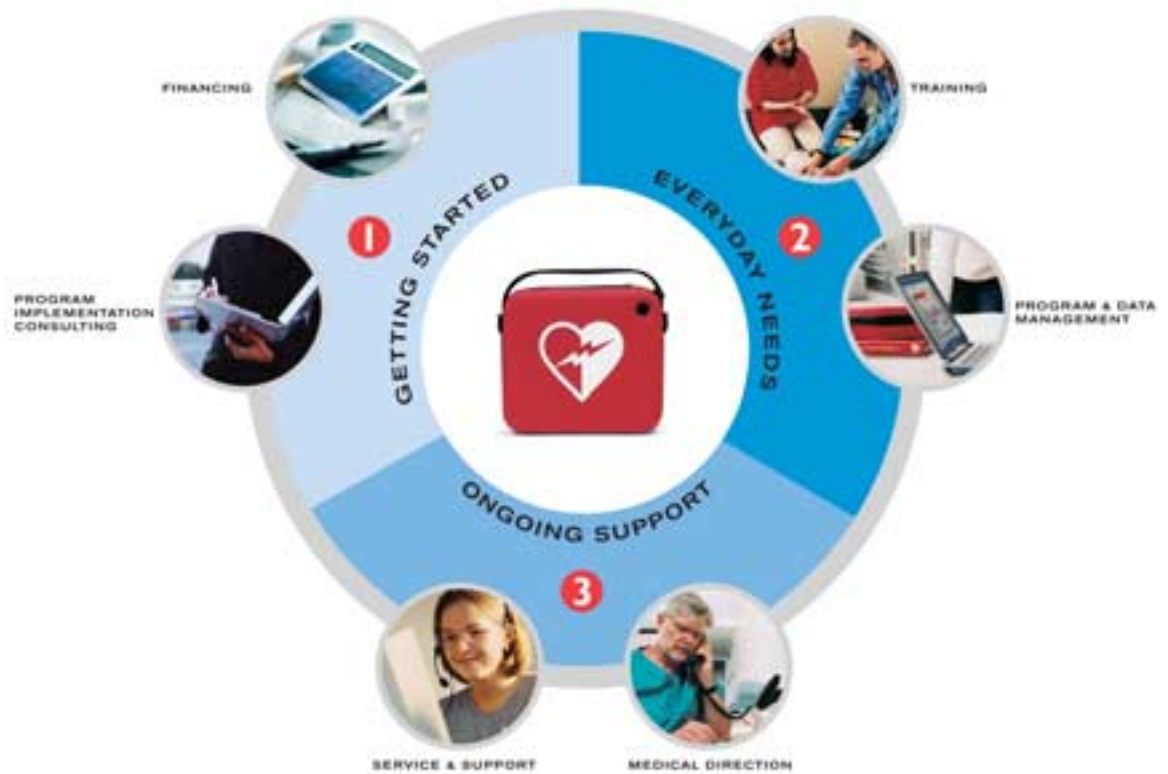


\* Changes to default values should be done only by authorized personnel under the oversight of a medical professional. Purchase of this product requires a prescription.



## HeartStart Essentials

Philips helps implement a comprehensive program with most everything you and your medical director will need to help save a life from sudden cardiac arrest. We'll get you started with pre-implementation consulting and site assessments. We can help manage your everyday needs including medical direction from a licensed physician, web-based program management, data management software, and responder and instructor training. Philips offers ongoing support with a five-year warranty, optional extended warranty and continued customer support from supplies ordering to technical assistance.



## Philips Medical Supplies

Philips is committed to producing and supporting the finest quality medical equipment and supplies. Our supplies are thoughtfully designed, tested and manufactured to deliver reliable and accurate results from your HeartStart Defibrillators. For a complete list of supplies, please visit <http://shop.medical.philips.com>.

**Philips Medical Systems  
is part of Royal Philips  
Electronics**  
[www.philips.com/heartstart](http://www.philips.com/heartstart)  
[medical@philips.com](mailto:medical@philips.com)

Philips Medical Systems  
3000 Minuteman Road  
Andover, MA 01810-1085  
+ 1 800 934-7372

© Koninklijke Philips Electronics  
N.V. 2005. All rights reserved.  
Reproduction in whole or in part  
is prohibited without prior written  
consent of the copyright holder.

Philips Medical Systems North  
America Corporation reserves  
the right to make changes in  
specifications or to discontinue any  
product at any time without notice  
or obligation and will not be liable  
for any consequences resulting  
from the use of this publication.

Philips is a registered trademark of  
Koninklijke Philips Electronics N.V.

Printed in The Netherlands.  
4522 981 81481/861 \* MAY 2005